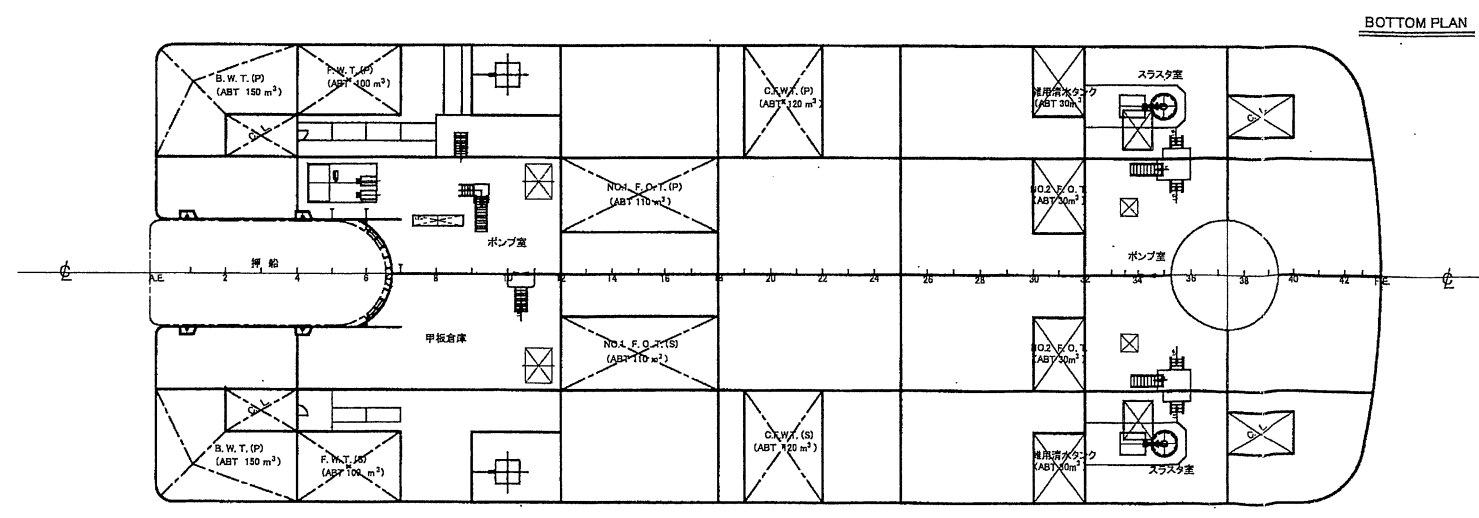
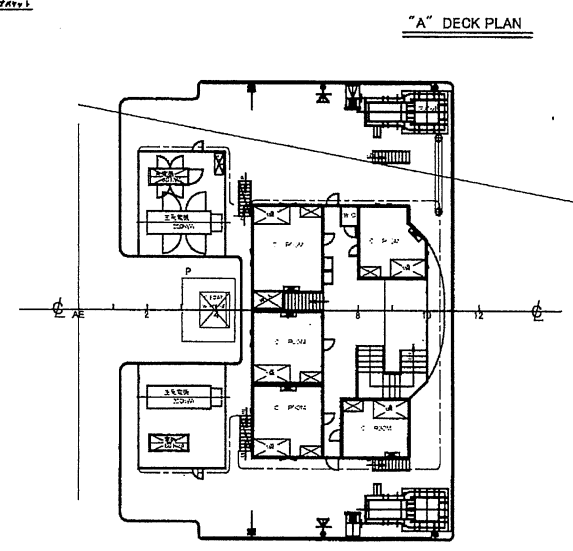
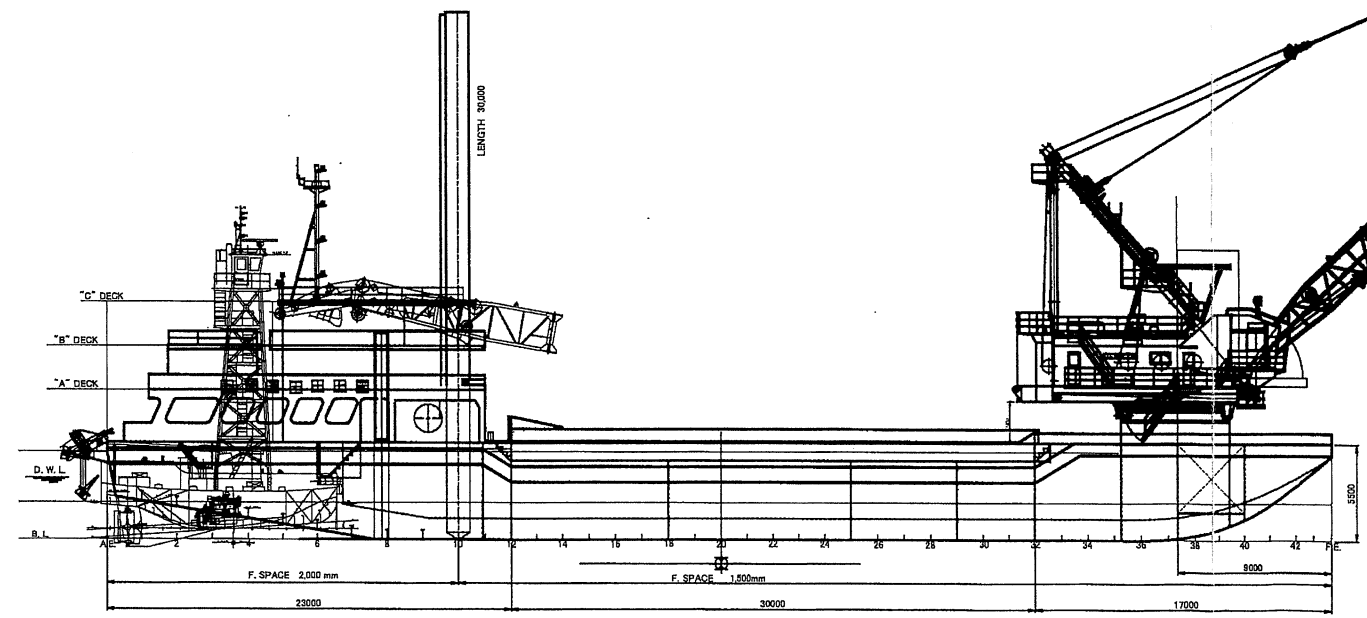
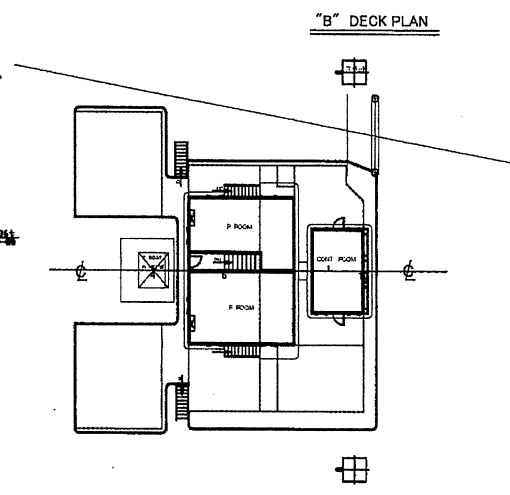
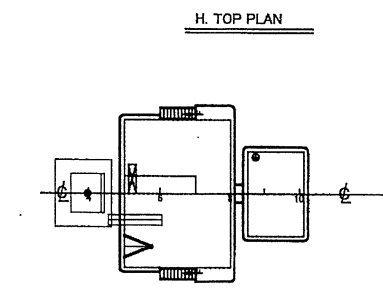
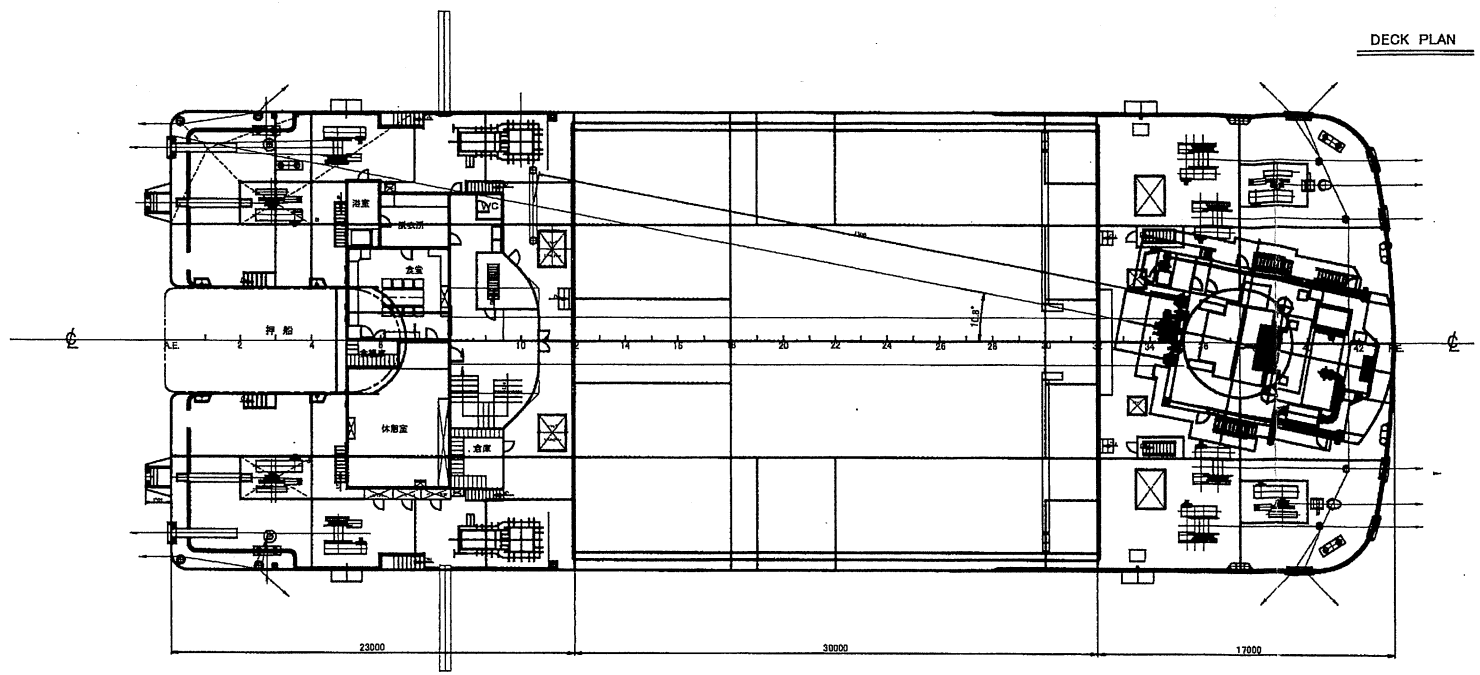


図面来歴
 ▲2019-5/13:完成図



PRINCIPAL DIMENSIONS

LENGTH (O.A)	70.00 (M)
BREADTH (MLD)	28.00 (M)
DEPTH (MLD)	4.50 (M)
DRAFT	3.50 (M)

OWNER	有限会社 曹務丸建設(株)	NAME OF SHIP	第七十三番丸
TYPE	300 T 吊全旋回式起重機船	S. NO	487
APPROVED	1.N.	一般配置図	
CHECKED			
DRAWN	1.N.		
SCALE	1/200		
ORDER	DRAWING NO. G-002-00F	REV	▲
KUMAMOTO DOCK CO.,LTD			